

**Alresford & District Horticultural Society are most grateful to the following businesses for their generous sponsorship**

**C E Evans & Son, High Class Family Butcher**  
8 West Street, Alresford  
01962 732477 [www.ceevansandson.co.uk](http://www.ceevansandson.co.uk)

**Hellards Independent Estate Agents**  
No.11, Broad Street, Alresford  
01962 736333 [www.hellards.co.uk](http://www.hellards.co.uk)

**The Mid-Hants Railway Ltd 'Watercress Line'**  
The Railway Station, Alresford  
01962 733810 [www.watercressline.co.uk](http://www.watercressline.co.uk)

**Sole Butchers Ltd**  
Butchers and Game Dealers of Distinction  
5 Broad Street, Alresford  
01962 735221 [www.solebutchersofalresford.co.uk](http://www.solebutchersofalresford.co.uk)

**Eddolls Carpets Ltd**  
30 Broad Street, Alresford SO24 9AQ  
01962 735715 [www.eddollscarpets.com](http://www.eddollscarpets.com)

**D Barker & Son**  
Goldsmiths & Silversmiths  
40a West Street, Alresford SO24 9AU  
01962 732200 [www.dbarkerandson.co.uk](http://www.dbarkerandson.co.uk)

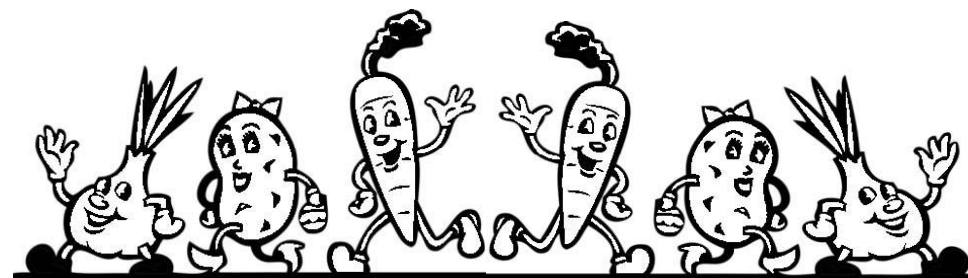
# **ALRESFORD & DISTRICT HORTICULTURAL SOCIETY PRODUCE, FLOWER & CRAFT SHOW SCHEDULE 2019**

**SATURDAY 7th SEPTEMBER**

**TICHBORNE PARK  
Near ALRESFORD**

**(By kind permission of  
Tichborne Estates & Grange Farm Partnership)**

**Exhibiting is open to members and non-members**



Held in conjunction with the  
**ALRESFORD and DISTRICT AGRICULTURAL SHOW**

## SHOW RULES for ENTRIES

1. All exhibits must be the bona-fide property of, and have been grown in the garden of the exhibitor, except in Sections F, G, H, J, K & L.
2. Only one entry per person in any one class.
3. The Committee reserves the right to withdraw any prize should the judges consider the entries of insufficient merit.
4. Points for special prizes: 1st - 3 points, 2nd - 2 points, 3rd - 1 point.
5. The Show Tent will be open from 5.30pm to 7.30pm on the 6<sup>th</sup> September, and from 7.00am on 7<sup>th</sup> September for entries to be staged. For those exhibitors who will be setting up on Friday evening and/or Saturday morning but not attending the Agricultural Show please call the Horticultural Show Manager. See entry forms (pages 10 & 11) for more details.  
ALL EXHIBITS MUST BE STAGED BY 8.30am ON SHOW DAY, WHEN THE TENT WILL BE CLOSED FOR JUDGING AT 8.45am
6. Fees per entry - The fee is 50p, except in the Championship classes which are £1. Children's classes are 10p. Children entering adult classes 50p. Cheques payable to Alresford and District Horticultural Society.
7. Entries close at 5.00pm on Tuesday, 3<sup>rd</sup> September - See Entry Form.
8. Prize money will be available for collection on show day between 3.00pm and 4.30pm, any exhibit or prize money not collected by 5.00pm will become the property of the Society.
9. Prize-giving will be at approximately 4.30pm – see poster in show tent for confirmation.  
  
PLEASE LEAVE EXHIBITS IN PLACE UNTIL THE PRIZES HAVE BEEN PRESENTED.
10. The Committee will not hold themselves responsible for any loss, but every care will be taken by the stewards.
11. All entry forms and fees to be deposited in the box at D&G Hardware, Broad Street, Alresford or can be posted or delivered to 22 Sun Hill Crescent, Alresford SO24 9NJ

## SECTION L CHILDREN'S CLASSES

### FLOWER ARRANGEMENTS

#### **CLASS**

- 144.** Under 8 years   **"An arrangement in a jam jar"**  
An exhibit of Flowers & Foliage
- 145.** Under 12 years   **"An arrangement in an unusual container"**  
An exhibit of Flowers & Foliage
- 146.** Under 17 years   **"An arrangement for a harvest display"**  
To include fruit and/or vegetables

### FOOD

**All entries to be displayed on paper plates 23cm maximum**

- 147.** Under 8 years   – **5 Flapjacks**
- 148.** Under 12 years   – **5 Cheese scones**
- 149.** Under 17 years   – **A jam filled Swiss roll**

### DESIGN and CREATE

**Maximum Sizes for Classes 152 - 157 are 60cm x 60cm x 60cm**  
**Not a kit**

- 150.** Under 8 years   – **A vehicle using upcycled materials**
- 151.** Under 12 years   – **A scarecrow to be displayed standing up**
- 152.** Under 17 years   – **"I made it myself"** made with upcycled materials
- 153.** Under 8 years   – **Open Class.** An article which you have made yourself
- 154.** Under 12 years   – **Open Class.** An article which you have made yourself
- 155.** Under 17 years   – **A case for a mobile phone or tablet**

**SECTION H**  
**DESIGN AND CREATE**

**Display size for all entries in this section is 60cms max x 60cms max x 60cms max  
unless otherwise stated  
Items may be displayed flat or supported**

**CLASS**

- 127. A picture no larger than 26cm x 21cm (to include mount but not framed)
- 128. A metal, ceramic or wooden object
- 129. A handmade card
- 130. Upcycling (something new from something old)
- 131. **Open Class** An article which you have made (NOT A KIT)

**SECTION J**  
**TEXTILES**

**Display size for all entries in this section is  
46cms max x 46cms max unless otherwise stated (items may be folded)**

- 132. A knitted or crocheted item
- 133. An item made of handmade lace – all types
- 134. Design and make a toy
- 135. A modern decorative cushion cover 40 cm x 40 cm
- 136. Any other item or technique not mentioned above  
e.g. Patchwork, felting, embroidery, or collage
- 137. Trauma Teddy - please see page 12 for instructions of how to make, and the Alresford and District Horticultural Society website for more information and photos  
[www.alresfordhorticultural.org](http://www.alresfordhorticultural.org)

**SECTION K**  
**AMATEUR PHOTOGRAPHY**

**Photographs to be mounted, not larger than 36cm x 28cm to include mount**

- 138. 1 Colour Print, "After Dark"
- 139. 1 Colour Print, "Vintage"
- 140. 1 Colour Print, "Markets"
- 141. 1 monochrome print, (white plus one other colour e.g. black, greyscale or sepia  
"any subject")
- 142. Under 12 years 1 Colour Print, "Street Life"
- 143. Under 17 years 1 Colour Print, "Shadows"

- 12. For the purposes of this schedule, a Novice is one who has not previously won a cup, plaque, medallion or certificate (not a prize card) at this show for an exhibit in the relevant section.  
NB Children may exhibit in all classes subject to the rules shown.
- 13. Any Competitor who has won the Banksian Medal in the last 2 years is not eligible to win this medal.
- 14. The rules of the R.H.S., N.D.S., N.A.F.A.S., N.R.S., will be followed in judging the relevant exhibits, with the exception of Rule 4 of the RHS Show Handbook. Members of the same household will be eligible to compete in the same class, provided that the produce exhibited has been cultivated by the person named on the entry form.
- 15. Any dispute arising will be settled by the Judge and Show Manager, whose decision shall be final.
- 16. Any enquiry about the schedule should be made to:-  
Show Manager, Mrs Ann Winfield, Tel: 01962 867596

**HINTS & INFORMATION FOR EXHIBITORS**

**The Show is open for everyone to enter**

Not entered before? Why not enter a Novice class?

The single most important rule is to READ THE SCHEDULE. (e.g number required). Make sure that your exhibit is not classed as N.A.S. (Not According to the Schedule). Try to make your exhibit look as attractive as possible. All exhibits, whether they win a prize or not, go to make up the Show.

Evenness, freshness and freedom from disease are more important than size, unless stated. EXHIBITORS SHOULD COLLECT THEIR EXHIBITOR ENTRY CARDS FROM THE SECRETARY'S TENT ON ARRIVAL.

Before judging, the stewards will make sure that all the entry cards are turned over, so that the exhibitor's name is not visible. After judging, they will be placed face upwards.

## VEGETABLES

They should be cleaned, using plenty of water and a sponge. It makes for better presentation if tops are trimmed and bound with raffia, or an equivalent. Be careful when lifting carrots and parsnips not to break the long "tail".

- (i) Parsnips, carrots, cabbages, beans and beetroot are laid on the table
- (ii) Potatoes, tomatoes, shallots and peppers are best placed on a white paper plate
- (iii) Shallots should be mounted on a dish of dry sand, and onions on cardboard rings, such as ones cut from kitchen roll containers
- (iv) Brassicas should have not less than 75mm of stump left
- (v) All varieties of peas and beans should have stalks attached
- (vi) Courgettes can be up to 200mm in length or 75mm in diameter for round cultivars

## FRUIT

To be exhibited on white paper plates

Try to avoid removing the natural "bloom" on all fruit, including apples and pears

With the exception of peaches, nectarines and apricots, all fruit should be shown with stalks

## FLOWERS

Make sure that they are firmly in the vase, and drawing up water. You may use kitchen roll or newspaper to wedge the stems in the vase. Vases are provided unless otherwise stated.

If five blooms are asked for, arrange three above and two below, or vice versa. If three are asked for, place them two and one.

The size of the pot is the internal measurement. Avoid using outer containers for the pot. If the schedule states "not exceeding", it is quite in order to use a smaller size.

## CULINARY

Domed covers will be provided for entries once they are on the table. Discreetly labelling your exhibit helps to avoid confusion.

Please do not remove covers from the tent.

Dishes must not contain rice, pâté, meat, fish, cream or uncooked egg.

Use the freshest ingredients possible.

Use either metric or imperial measures; do not mix the two.

All preserves to have new metal screw tops or wax disc and cellophane jam pot covers. Jars to be free of advertising. Labels to state type and day, month and year made.

## SECTION G CULINARY

**Plastic dome covers will be provided for entries once they are on the table**  
**Dome sizes are 27cm and 19cm, exhibits must fit under a dome**  
**Please leave domes in tent at the end of the show**  
**Please see Hints & Information for Exhibitors**

### **CLASS**

- 110. 1 yeast based fruit loaf
- 111. A plaited loaf using bread mix
- 112. 1 Traditional Victoria sandwich cake with jam filling
- 113. 5 decorated cup cakes
- 114. 5 unfilled brandy snaps

### 115. Cherry Loaf Cake

Ingredients:

- 200g (7oz) red or natural glacé cherries
- 225g (8oz) self raising flour
- 175g (6oz) soft margarine
- 175g (6oz) caster sugar
- Finely grated rind of 1 lemon
- 50g (2oz) ground almonds
- 3 large eggs

Method:

1. Preheat oven to 180°C/Fan160°C/Gas 4. Grease a 900g (2lb) loaf tin then line the base with baking parchment.
2. Cut cherries into quarters, place in a sieve and rinse under running water. Drain well then dry thoroughly on kitchen paper.
3. Measure all the remaining ingredients into a large bowl and beat well for 1 minute to mix thoroughly. Lightly fold in the cherries. Turn into prepared tin.
4. Bake in the preheated oven for 1-1½ hours or until well risen and a skewer inserted into the centre comes out clean. Leave to cool for 10 mins. Then turn out. Peels off the parchment and finish cooling on a wire rack.

- 116. 5 Macarons
- 117. 5 Gluten free sweet biscuits
- 118. 5 Savoury biscuits
- 119. Savoury vegetarian dip with crudité
- 120. A fruit turnover with short crust pastry
- 121. Jar of Marmalade, 450g (1 lb) approx..
- 122. Jar of Jam, 450g (1 lb) approx..
- 123. Jar of Jelly, 225g (8oz) approx..
- 124. Jar of Mature Chutney 450g (1 lb) approx..
- 125. Jar of pickled vegetable/s
- 126. **CLASS FOR MEN ONLY** An iced chocolate cake

**SECTION F**  
**FLORAL ART - OPEN**

To be judged in accordance with the  
NAFAS Competitions Manual, Third Edition 2015

**NOTES FOR COMPETITORS**

**1. An Exhibit**

- a) is composed of natural plant material, with or without accessories contained within a space as specified in a show schedule
  - b) backgrounds, bases, containers, drapes, exhibit titles and mechanics may always be included in an exhibit unless otherwise stated
  - c) more than one placement may always be included unless otherwise stated
  - d) in all exhibits (except Still Life) natural plant material must predominate
- 2. No height restrictions except where stated
  - 3. A novice is an exhibitor who has never won a cup at this Show
  - 4. All exhibits may be brought to the Show completed
  - 5. All exhibits staged on tables covered in black plastic

**CLASS**

**105. 'Harvest Supper' CHAMPIONSHIP CLASS**

An exhibit – To include fruit and/or vegetables. To be viewed from the front  
Space allowed 76 cm wide x 61 cm deep

**106. 'A Taste of the Orient'**

An exhibit - To be viewed from the front  
Space allowed 61 cm wide x 61 cm deep

**107. 'Fire and Fusion'**

An exhibit - To be viewed and judged from the front  
Space allowed 46 cm wide x 46 cm deep

**108 'Coffee and cake'**

Miniature exhibit - To be viewed all round  
displayed on a black 12cm square block provided  
Size not to exceed 10 cm in width and depth, and 15cm in height

**109. 'An Elegant Supper' NOVICES ONLY**

An exhibit for a dining table to include a candle.  
To be viewed and judged from the front  
Space allowed 46 cm wide x 61 cm deep

**JUDGES**

**Vegetables:** Mr H Jane  
Mr T Perren

**Dahlias and Chrysanthemums:** Mr M Burr

**Open Flowers:** Mrs S Burr

**Floral Art:** Mrs D Bright

**Culinary:** Mrs M Williams  
Mrs C Lanfear  
Mrs S Garwood

**Design and Create:** Mrs J Varrall

**Textiles:** Mrs J Varrall

**Photography:** Mr D McKibbin

**Children's Classes:** Miss J Perry

**PRIZE MONEY**

**DAHLIA & CHRYSANTHEMUM CHAMPIONSHIP CLASSES 54, 55 & 71**

1st £20  
2nd £12  
3rd £8

**VEGETABLE AND FLORAL ART CHAMPIONSHIP CLASSES 20, 105**

1st £20  
2nd £12  
3rd £8

**FLORAL ART CLASSES 106 - 111**

1st £10  
2nd £6  
3rd £4

**REMAINING CLASSES**

1st £1  
2nd 70p  
3rd 50p

including Children's Classes

**SECTION A - VEGETABLES AND FRUIT  
NOVICES**

Open to those who have not previously won a cup, plaque, medallion or certificate  
(not a prize card) for an exhibit in this section

**CLASS**

1. Potatoes other than white 4
2. Potatoes white 4
3. Beetroot 3
4. Chilli Peppers 5
5. Beans – Runner 5
6. Carrots, long pointed 3
7. Carrots, stump rooted 3
8. Courgettes, up to 200mm in length, or 75mm in diameter for round cultivars 2
9. Marrows (including edible squashes) 2
10. Exhibition shallots, shown on a dish or plate of sand 6
11. Tomatoes, with Calyx 5
12. Tomatoes, Small Fruited Cherry, with Calyx 5
13. Onions each 250g or under, shown on rings 3
14. Onions, each over 250g, shown on rings 3
15. Garlic Bulbs 3
16. Any one variety of Vegetable not listed above. Number as in section B or call Show Manager
17. Cooking Apples 3.
18. Any one variety of Fruit not listed above. Number as in section B or call Show Manager
19. Gardener's basket. 5 different veg and/or fruit 30cm x 25 cm max.

**SECTION E – FLOWERS**

**FUCHSIA – OPEN**

**CLASS**

77. 6 Fuchsia Heads in Box (Supplied) – 1 Cultivar
78. 1 Fuchsia - Single Flowered Cultivar - Pot Size 17cm
79. 1 Fuchsia Double Flowered Cultivar - Pot Size 17cm
80. Alresford and District Hort. Soc. members only given fuchsia, pot grown

**ROSES – OPEN**

81. 3 Stems Cluster Flowered Roses in 20cm vase
82. 3 Stems of any Rose/s. To be displayed in a vase, any size
83. 1 Specimen Bloom Large Flowered Rose. To be displayed in a vase, any size
84. 1 Bowl of roses, one or more cultivars, rose foliage only. Bowl to be supplied by exhibitor  
Max exhibit size 30cm

**GENERAL FLOWERS - OPEN**

85. 3 Spikes of Gladiolus
  86. 5 Stems of Zinnias
  87. 1 Pot Pelargonium, container up to 20cm
  88. 3 Blooms of Clematis in a dish, 1 or more Cultivars
  89. 5 stems of Rudbeckia, in a vase
  - 90.\* Pot Plant, foliage, container up to 20cm Maximum total height 1m including pot
  - 91.\* Pot Plant, flowering, container up to 20cm Maximum total height 1m including pot  
(excluding Pelargoniums or Fuchsias, but may include Orchids)
  - 92.\* 1 Cactus or succulent, container up to 20cm
  - 93.\* A bowl of succulents - max bowl size 30cm diameter.
  94. Vase of cultivated flowers, 12 spikes of at least 3 cultivars
  95. A vase of dried flowers and seed heads
- \* Must be in owner's possession for at least 6 MONTHS**

**FLOWERS - NOVICES**

96. Berried shrubs, 3 stems, 3 different species
  - 97.\* 1 Pot Plant, flowering, container up to 20cm maximum total height 1m
  98. Gladiolus, single spike
  99. A vase of home grown flowers, 6 stems of 3 cultivars
  100. Asters 5 stems - in a vase
  101. Sunflowers, 3 stems, one or more cultivars, any stage of development – in a vase
  102. Flowering Shrubs, 3 stems of 3 different species, excluding Fuchsias - in a vase
  103. Sedums, 3 stems, one or more cultivars – in a vase
  104. A vase of dried flowers and/or seed heads
- \* Must be in owner's possession for at least 6 MONTHS**

---

**Alresford and District Horticultural Society**

**Meet on the 2<sup>nd</sup> Wednesday of each month  
(except December)**

**St Gregory's Church Hall, Grange Road, at 7.30pm  
Everyone Welcome**

**Activities:**

**Speakers, Members Only Flower Shows,  
day trips to gardens,  
a garden party & annual dinner**

**Visitors to the meetings £3**

**Annual Membership £15**

**[www.alresfordhorticultural.org](http://www.alresfordhorticultural.org)**

**The Royal Horticultural Society's Banksian Medal is awarded to the winner of the highest number of place points in the whole of the horticultural classes at the show. See also Rule 15.**

**SECTION C**  
**DAHLIA – OPEN**

**CLASS**

54. The Alresford Dahlia **CHAMPIONSHIP CLASS**  
3 Vases, 3 Distinct classifications, 3 Blooms per vase  
Giants and / or large may be staged 1 per vase
55. Small Dahlia **CHAMPIONSHIP CLASS**  
3 Vases, 3 Distinct cultivars, 3 Blooms per vase  
chosen from at least 2 distinct classifications  
ie. Cactus, / Semi cactus, Decorative, Ball or Waterlily may be used
56. 3 Giant and or Large, Decorative, Cactus / Semi Cactus  
May be staged singularly
57. 3 Medium Decoratives
58. 3 Medium Cactus / semi Cactus
59. 3 Small Decoratives
60. 3 Small Cactus / Semi Cactus
61. 3 Small Ball
62. 3 Miniature Ball
63. 3 Miniature Decoratives
64. 6 Pompon
65. 3 Blooms of one classification not mentioned in classes 56 to 64

**DAHLIA – NOVICES**

66. 3 Decorative Dahlias, one or more cultivars in one vase
67. 3 Cactus or Semi-Cactus Dahlias, one or more cultivars in one vase
68. 5 Pompon Dahlias, one or more cultivars in one vase
69. 1 Dahlia, any cultivar or type in a vase
70. 1 Dahlia, any cultivar or type, growing in a container up to 22cm

**For Dahlia Classifications and Details - Please see page 13**

**SECTION D**  
**CHRYSANTHEMUM - OPEN**

71. The Chrysanthemum **CHAMPIONSHIP CLASS**,  
3 vases of Chrysanthemums, 3 distinct cultivars, 3 blooms of one cultivar in each vase
72. Vase of Incurved Chrysanthemums, 3 blooms, any cultivar or cultivars
73. Vase of Reflexed Chrysanthemums, 3 blooms, any cultivar or cultivars
74. Vase of Intermediate Chrysanthemums, 3 blooms, any cultivar or cultivars
75. Vase of Chrysanthemums, 5 blooms, any cultivar or cultivars
76. 1 Chrysanthemum, any cultivar including Sprays

**SECTION B - VEGETABLES AND FRUIT**

**CLASS**

20. **CHAMPIONSHIP CLASS** A Collection of 6 kinds of Vegetables, 3 of each kind,  
Except:  
Cauliflowers and celery which must be 2,  
peas and tomatoes, which must be 6,  
and beans and shallots, which must be 9,  
displayed in 76cm x 76cm space: garnishing allowed.
21. Cucumbers 2
22. Tomatoes with calyx, 5
23. Tomatoes, Small Fruited Cherry, with Calyx 5
24. Onions, each 250g or under, shown on rings 3
25. Onions, each over 250g, shown on rings 3
26. Beans - Runner 5
27. Beans - French 5
28. Sweetcorn 2
29. Potatoes white 5
30. Potatoes other than white 5
31. Exhibition Shallots, shown on a dish or plate of sand 6
32. Pickling Shallots, must be 30mm in diameter or under 6
33. Carrots, long pointed 3
34. Carrots, stump rooted 3
35. Beetroot 3
36. Cabbage, with 75mm stump 1
37. Edible Squashes 2
38. Courgettes, up to 200mm in length, or 75mm in diameter for round cultivars 4
39. Parsnips 3
40. Peppers (Capsicums) 4
41. Any one variety of Vegetable not listed above - call Show Manager for quantity
42. Heaviest Marrow
43. Heaviest Onion, dressed
44. Longest Runner Bean
45. The most interesting misshapen vegetable
46. Culinary Herbs, 6 kinds in a bunch, arranged in your own vase  
Foliage only, (not flowers or seeds)
47. Chilli plant growing in a container up to 20cm

**FRUIT**

48. Dish of Raspberries 10
49. Dessert Apples 5
50. Cooking Apples 5
51. Dessert Pears 5
52. Dessert Plums 7
53. Any one variety of fruit not listed above - call Show Manager for quantity

# Alresford & District Horticultural Society Awards

## BANKSIAN MEDAL

Awarded for the most points in the Horticultural Classes

## Dr LYNDON SKEGGS CHALLENGE CUP

For the highest number of points in Section A Novice Fruit and Veg

## HAMPSHIRE CHRONICLE CHALLENGE CUP

For the highest number of points in Section B Open Fruit and Veg

## PALMER FRUIT CUP

For the best entry in the Fruit Classes 48-53

## TONY BRAVERY TROPHY

For the longest runner bean, Class 44

## NATIONAL VEGETABLE SOCIETY MEDAL

For the most meritorious Vegetable exhibit in the show

## CURTIS CUP

For the winner of the Alresford Dahlia Championship, Class 54

## JOHN SAUNDERS CUP

For the winner of Small Cactus or Semi Cactus Dahlia Championship, Class 55

## ALRESFORD CHAMBER OF TRADE CHALLENGE CUP

For the best Floral Exhibit in Dahlia and Chrysanthemum Open Classes 56-65, 72-76

## N.D.S. SILVER and BRONZE MEDALS

For the 1st and 2nd best vases of Dahlias exhibited in the show

## IAN WAITE NOVICE DAHLIA CUP

For the best vase of Dahlias in the Novice Classes 66 to 70

## MERFYN HEWINS MEMORIAL TROPHY

For the highest number of points in the Novice Dahlia Classes 66 to 70

## WESSENDEN CHALLENGE TROPHY

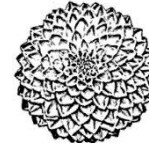
For the Chrysanthemum Championship, Class 71

## Classification and Formation information for some types of Dahlias



### Waterlily Dahlias

Waterlily dahlias have fully double blooms characterised by broad ray florets (petals) that are slightly involute (turned inwards) along their length (longitudinal axis) giving a saucer shaped appearance to the bloom. The depth should not be more than one third of the diameter of the bloom.



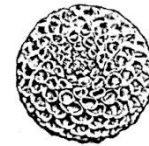
### Decorative Dahlia

Decorative dahlias have fully double blooms showing no disc. The ray florets are generally broad and flat and may be involute for no more than 75% of their length (longitudinal axis) or slightly twisted, and usually bluntly pointed.



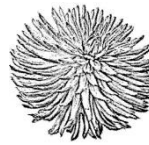
### Ball Dahlias

Ball dahlias have fully double blooms, ball shaped or slightly flattened. The ray florets rounded at the tips, with margins spirally arranged and involute for at least 75% of the length of the florets.



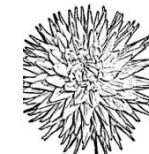
### Pompon Dahlias

Pompon dahlias have fully double spherical blooms, with florets largely involute along their length (longitudinal axis).



### Cactus Dahlias

Cactus dahlias have fully double blooms, the ray florets are usually pointed, the majority narrow and revolute (turned outwards) for 65% or more of their length (longitudinal axis) and either straight or incurving.



### Semi-Cactus Dahlias

Semi-Cactus dahlias have fully double blooms, the ray florets are usually pointed and revolute for more than 25% and less than 65% of their length and broad at the base and either straight or incurving.

### DAHLIA CLASSIFICATIONS

Giants	over 10"	(250mm)
Large	between 8" & 10"	(200mm & 250mm)
Medium	between 6" & 8"	(150mm & 200mm)
Small	between 4" & 6"	(100mm & 150mm)
Miniature	not exceeding 4"	(100mm)
Pompon	not exceeding 2"	(50mm)





### **TRAUMA TEDDY**

The Red Cross organises the collection of the teddies, which are then distributed via the Ambulance Service, the Fire Brigade and hospitals to children who have experienced a trauma. The pattern describes a teddy with pants and a shirt, but the pattern can be varied. The main thing is that the teddy has a personality of its own. There are variations of the pattern on the internet which you can use.

**YARN:** Double knitting (**no angora or mohair**) Preferably washable

**NEEDLES:** No. 9 (3.75 mm) or no. 10 (3.25mm) needles (Loose knitters use No 10)

**LEGS & PANTS:** Leg 1: Cast on 12 stitches. Knit 34 rows. Change colour for pants and knit 8 rows. Leave stitches on the needle. Leg 2: Same as Leg 1

Pants: Join legs by knitting across both legs. Knit 14 rows to finish pants

**BODY:** With all 24 stitches on one needle change colour for shirt. Knit 18 rows.

Sleeve: Cast on 12 stitches at the beginning of the next 2 rows. Knit 18 rows.

Next 2 rows cast off 12 stitches (this forms the arms – 24 stitches remain)

Alternatively – do not increase for arms but once head is sewn together, pick up 8 stitches either side of the neck (16 Stitches) and knit 20 rows plus 10 rows main colour for hands.

**HEAD:** Knit 34 rows. Cast off .Repeat the instructions to obtain the other side of the Teddy

**Or** do not cast off but repeat the instructions in reverse order for the second side

**FINISHING:** Sew on face. Join up leaving a gap at the top of the head for filling

Form ears with stitching before filling

**FILLING:** should preferably new polyester or acrylic but can be wool. No foam.

### **COLONEL PALMER MEMORIAL TROPHY**

For the highest number of points in the Roses Classes 81-84

### **BOB and GRACE DENNIS TROPHY**

For the best exhibit in General Flowers Classes 85-95

### **CHALLENGE CUP**

For the best Floral Exhibit of Flowers in the Novice Classes 96-104

### **ALRESFORD FLOWER CLUB TROPHY**

For Floral Art Championship Class 105

### **JOCK WATSON CHALLENGE TROPHY**

For the best exhibit in the Floral Art Classes 106 to 109

### **LADY TICHBORNE CHALLENGE CUP**

For the best exhibit in the Floral Art Miniature Exhibit Class 110

### **THE CANDOVER TROPHY FOR NOVICE FLORAL ART**

For the winner of the Floral Art Novice Class 111

### **NICHOLL CHALLENGE CUP**

For the highest number of points in Culinary Section G

### **A TANKARD**

Men's Cookery, Class 128

### **BRITISH WOOD CARVERS "HAMPSHIRE BRANCH" CUP**

For the best overall exhibit in Design and Create Section H

### **MRS C. DAUBNEY TROPHY**

For the best exhibit in the Textiles Section J

### **MADDIE ATTENBOROUGH PHOTOGRAPHY CUP**

For the best Photography Exhibit in Section K

### **CHILDRENS TROPHIES**

For the best exhibit in each age group, Section L and photography classes 144 and 145

### **MID HANTS RAILWAY PRIZE**

For the best exhibit under 12 years

